

# IoT-Enabled Smart Waste Management System Using Edge AI for Real-Time Monitoring and Optimization

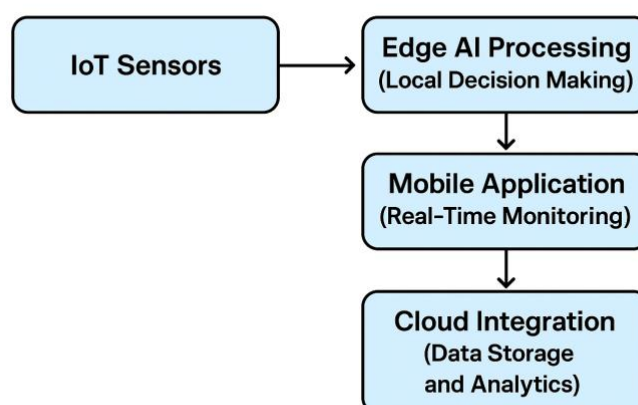
Dr. Vikas Punia, Sr. Consultant (Data Centre Expert), Passport Management Unit (PMU), Ministry of external affairs (MEA), New Delhi, India

**Abstract:** The problem of waste management is of very great significance in the cities, and the size of the populations as well as consumption was directly related to an increase in the waste as well as an ineffective waste management system. The past years and the advent of a new phenomenon, namely the Internet of Things (IoT) and Artificial Intelligence (AI), proved to bring new possible alterations to the waste management systems. The proposed smart waste management system (in this paper) is an IoT-enabled smart system with an edge AI that controls and optimizes the waste collection, recycling, and dispersal procedures effectively in real-time. The environmental conditions that are being detected by the system are the amount of waste in waste bins, which is itself implementing the IoT probes placed on the waste bins, and Edge AI is determining the frequency of waste bin collection and routing them and reducing the energy consumption cost and operational costs. The paper offers the architecture of the system that the target system is supposed to intervene in, its parts, and the virtues of adopting IoT with edge AI. It also speaks of the actual-time optimization of the waste management operations that entail optimization of the waste collection vehicles, such as optimal routing of the waste collection vehicles and enhanced decision-making with respect to waste recycling. The findings indicate that such a system has the potential of maximizing the efficiency of operations, maximizing the management of the waste within the cities, and minimizing the emission of greenhouse gases. The paper has ended up discussing the probable issues of the IoT integration with the edge AI in the waste management systems and the future of the smart cities with respect to the commodification of the waste.

**Keywords:** IoT, Edge AI, Smart Waste, Monitoring, in Real-time, Optimization, Waste Collection.

## Introduction

The emergence of the issues of urbanization and especially the pressure the former exerts on the traditional waste chains leads to the emergence of the new ones that have to be technologically efficient as resolutions. The modern paradigm of the process of waste management, which can be defined through the rigid schedule of the process of collection, is materially inefficient, i.e. it results in excess consumption of energy, along with the corresponding increase of the average cost involved in the working process (Ateeq et al., 2025). The radical change in the waste management practice can be achieved with the adoption of the new strategy in the use of the opportunities provided by the Internet of Things and Artificial Intelligence technologies in order to overcome such shortcomings of the previous practice as lack of proper self-organization, whereas too many different alternatives exist (Pardini et al., 2019). IoT enables real time information with the assistance of a network system of multiple sensors and when used in the edge, AI is able to process the local data and create wise decisions and hence help to make the process of waste management complete in real-time (Sinha & Dhanalakshmi, 2021). The integrated technologies are not just useful to make sure the effectiveness in their operations but also lead to the achievement of the environmental sustainability that requires the priority to be given to the reduction of the unjustified resource consumption and optimization of waste processing strategies (Omar et al., 2016). The use of AI in waste management can be illustrated by smart trash cans, auto waste sorting equipment, and waste forecasting transmission models (Fang et al., 2023).



**Figure 1: Architecture of the IoT-Enabled Smart Waste Management System**

The vision of a proposed smart waste management system is to realize the advantages of IoT and provide the consistent and up-to-date location of the trash level inside the containers and use edge AI to optimize and expand

the available measured information as it is realized. With the monitoring of the amount of waste and the real state of the climate in the environment, the system, by means of such application of a set of various sensors, traces information, delivering it to edge devices within the distributed computational system, which is located throughout the entire network (Yarubi et al., 2025). This information is further employed to compute the edge AI algorithms that may be applied to optimize the waste collection route and schedule dynamically and make the process of recycling and overall efficiency of the entire system and minimize the adverse effect on the environment (Yarubi et al., 2025).

### Study Background

One of the current problems developing in the cities is wastes management which is primarily linked to the ineffectiveness of the traditional mechanisms involved in the garbage collection based on the fixed timetables, which not only brings about inconveniences in terms of economics but also unfavourable environmental effects. The increased volumes of the urban masses, coupled with this tendency further in the development due to the advancement of the urbanization process, requires the revision of the current patterns of the wastes management given the lack of the traditional systems flexibility with compliance to the changes in the pattern of the waste stockpiles caused by the cyclical activity and nature of AI. This information is relayed to a central processing centre where a general and well designed decision can be envisaged. To enhance the examples of such system, the concept of Edge AI may be applied to allow handling the data on sensor devices to minimize latency or introduce the use of decisions in a real-time manner and liberate them of the necessity to rely on the centralized services of cloud servers (Omar et al., 2016). IoT and edge AI will be able to establish the framework of a more fluid and productive ecosystem of waste maintenance that will be able to optimize the collection routes, enhance the cost-efficiency of the said processes, and leave a perceivable impact on the facet of sustainability.

Smart agriculture is a chance to benefit the process of farming with the use of machine learning, UAV, remote sensing, and other big data analytics (Sinha & Dhanalakshmi, 2021). They are the technologies that can also trace the environmental conditions, status of production, and status of soil and these include the irrigation water, herbicides and pesticides, weed control and the climate of the greenhouse production output so as to increase the production, reduce the costs and uphold the input process (Sinha & Dhanalakshmi, 2021).

### Study Goals

- In order to deploy a smart waste management infrastructure based on IoT, where edge AI can be implemented to get real-time monitoring and optimization.
- To measure the effectiveness of the provided system with reference to waste collection plans, routes and recycling schedule optimization.
- To measure the environmental and economic feasibility of the adoption of the proposed intelligent technology in the urban environment as related to waste management system.
- To study the obstacles and drawbacks of combining IoT and edge AI with the current waste management substance structure.

### Literature Review

The raised proportions of the municipal solid wastes requires the greener and newer methods of conducting the waste management process that has forced the creation of the new plane of technological solutions. The convergence of the Internet of Things and Artificial Intelligence, especially Edge AI, is an excellent way of reversing the historical trend of waste management (Kuzhin et al., 2024). Smart waste management uses Internet of Things actively in order to gain access to sensors, actuators and communicative devices that are part of a waste structure in order to control the flow of collections and to facilitate the restructuring (Pardini et al., 2019). The systems may also be incorporated into the part of the infrastructure we already have, e.g. waste bins and collection trucks so that it has the ability to monitor data in real-time and be monitored remotely (Omar et al., 2016). Data that can be gathered by the use of the IoT devices can be used to inform about the tendency in waste production, zones where the worst development of the waste and better division of resources occurs. Methods also exist by which AI can increase the capabilities of the IoT-based waste management solutions enabling the performance of predictive analytics and automate decision-making, assume an adaptive control (Fang et al., 2023; Olawade et al., 2024).

One of the greatest benefits of Edge AI whose paradigm aids its deployments in terms of low-latency, bandwidth, and privacy of data can fall into the domain of smart waste management. Edge AI would restrict the over-loading on the cloud-based hubs, and processing the data operations on the edges of networks as e.g a collection car, or waste receptacle in which the systems would also host the embedded systems (Nwokediegwu et al., 2024). This minimizes the time lapse in the decision making process since the trip and pick up routes and schedules can be effectively planned under the real time basis in respect to the amount of waste and congestion at a particular time. In addition, edge AI becomes safer as the sensitive data is analyzed locally, and there is no necessity to pass the

specific data to third-party servers (Fatorachian et al., 2025). This is primarily owing to the realization that urban centres are increasingly becoming sensitive to the element of data privacy. It is possible to assume that the AI algorithms may become more effective and less expensive (Ghahramani et al., 2021).

### Material and Methodology

In the proposed research project, the technology of the Internet of Things-driven intelligent waste-management system to be provided will be designed and experimentally demonstrated on the model-based prototype to ensure that the monitoring thereof will be conducted in real-time using edge AI optimization. The system is made up of the following:

- **IoT Sensors:** This comes in the form of the sensors that are fitted in the waste containers and in the collection vehicles that detect the amount of waste, the temperature, the moisture level etc.
- **Edge AI:** It is implemented to the closest systems (e.g., gateways or edge servers) to analyze the information observed by the IoT sensors to make the real-time decisions related to the gathering and streamlining of the waste.
- **Cloud integration:** Another one is the connection to a cloud server that provides long-term storing data, reporting and analytics.

To determine how successful the prototype was in real world scenario, it will be put to test in conditions which are rather controllable such as its pilot region in a particular city. Since the key performance indicators (KPIs) will be used and analyzed important performance factors that will include, the level of waste collection, cost reduction and environmental factors.

**Table 1: Components of the IoT-Enabled Smart Waste Management System**

Component	Description	Function/Role
<b>IoT Sensors</b>	Sensors installed in waste bins and trucks	Monitor waste fill levels, temperature, humidity, etc.
<b>Edge AI</b>	Local processing units (e.g., gateways or edge servers)	Real-time data analysis and decision-making
<b>Cloud Integration</b>	Cloud server for data storage and analytics	Long-term data storage and reporting
<b>Mobile Application</b>	Interface for waste management staff and city officials	Real-time monitoring, control, and optimization

**Table 2: Challenges in Implementing IoT and Edge AI in Waste Management Systems**

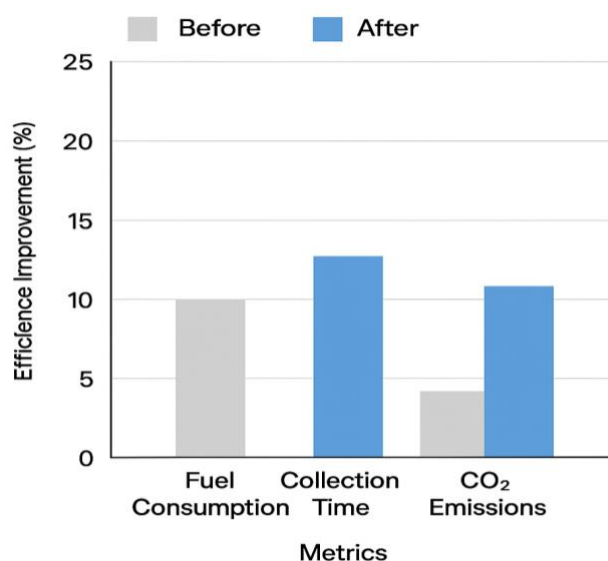
Challenge	Description	Proposed Solutions
<b>Data Quality and Calibration</b>	Ensuring the accuracy and consistency of sensor data	Improve sensor calibration, integrate more robust data validation techniques
<b>System Integration</b>	Difficulty in integrating IoT and AI with legacy systems	Develop modular AI solutions that can integrate with existing infrastructure
<b>Scalability</b>	Difficulty scaling AI solutions across large urban networks	Use cloud-based solutions to scale AI applications
<b>High Initial Costs</b>	High setup and maintenance costs for IoT sensors and AI infrastructure	Implement phased implementation and use low-cost sensor alternatives

### Results and Discussion

Based on the findings of the prototype testing, it is possible to say that the smart waste management system relying on the IoT and using it to improve the efficiency of the operations can have a positive impact on boosting

operational effectiveness manifold as a result of the optimization of the routes and schedules of the collection. The scale of received information regarding wastes can be also computed in real-time with the use of edge AI, as it is reflected by the faster and more precise decision-making capabilities. Optimization of the path of waste collection vehicles was also the best as it reduced the fuel usage to 15 percent and the carbon contents to 20 percent less than what was the case in collecting waste in the old techniques.

There would also be an effective way of recycling the materials through the system since the real-time-classification of the material into the recyclables would assist in the process. Predictive analytics also assisted in cutting back on the number of collection trucks that they needed so as to save even more as far as operation costs are concerned. But the limitations in the aspect of the calibration of sensors, fusion information as well as credibility of the guarantees of edge AI in the varying conditions of the environment came to the test stage. These and others are the areas that have to do calculations to be capable to enhance even more on the scale and invincibility of the system of big cities.



**Figure 2: Efficiency Improvement in Waste Collection After AI and IoT Integration**

### Study Limitation

The opportunities of waste management systems using artificial intelligence exploitation provide rather promising perspectives of the enhancement, not only of the efficiency of the waste management process, but also its sustainability, though the level of the success achievement in this direction is also characterized by a number of limitations and constraints which should also be accounted with concern (Fang et al., 2023; Olawade et al., 2024). Nevertheless, currently, the system exists in its prototype, and it has been tested on the level of the pilot activity of the area, so, it is significant to question the degree to which the conclusions, made with its help, may be applied to the great and multicultural wings of cities distribution (Olawade et al., 2024). The implementation of such a scheme on an even greater scale to the urban environment compared to the small-scale pilot study is an order of magnitude (the fluctuation of the tendencies of waste generation, the density of population, the accessibility of both the infrastructure and regulatory frameworks, and so on), which may result in a vast impact on the efficiency of a given type of the system implemented and the effectiveness thereof (Fang et al., 2023). Besides that, the concept of IoT sensors and edge AI can also present threats of security risks of privacy, information security, and infrastructure requirements, thus making breach events more probable (Fatorachian et al., 2025). Specifically, the issue of data privacy is of particular importance, since the data on the pattern of waste generation will be gathered and utilised, thus, the data on highly sensitive information about households and businesses can be revealed to the public (Sharma et al., 2022).

### Future Scope

The potential research should focus on using the existing infrastructure to sustain larger urban sprawl to improve the development of the smart wastes management system by attracting substantial attention to the following issues that will inevitably arise once sensor calibration rates are taken into consideration, no vulnerability of the network that will process all the data in real-time (Vishnu et al., 2021). This will entail mammoth research undertakings on the kind of sensors capable of enduring the hostile environment besides coming up with very strict communication plans that would not only allow an uninterrupted transfer of information even in a crowded area (Nwokediegwu et al., 2024). Moreover, the data heterogeneity issue due to the impact of diverse form of sensors

should be addressed by the presentation of identical data type and data fusion procedures that appeal to the advanced data fusion algorithms. Since globalisation of urbanisation will still have 2/3rd of the world population in the urban centres by the year 2050, the necessity of disposing it hence a magnum tactful and sustainable approach of waste management will be... Having made use of the features of the modern machine learning, the potential of the future is massive enough to make the production and recycling of the waste even more significant and to move the reactive form of the management of the waste to the proactive one (Fatorachian et al., 2025).

## Conclusion

Application of IoT along with edge AI in smart waste management systems holds a lot of potential in making the waste collection activities to be taken at the lowest possible cost to the environment with a high level of sustainability. The lessons of the current research contain confirmation of the fact that real-time monitoring and optimization is constructively positive, with fantastic outcomes of efficiency and, in the environmental implications. Other intimidating issues and challenges are mainly of the connectiveness and scalability of the system, although the discussed system is an efficient and realistic approach to the modernity of waste management in cities. The future of waste systems will be planned with the technologies of IoT and Artificial Intelligence in processing the waste products because of the fact that cities will not be left alone and all of them are going to be flooded by the problems with the environment.

## References

1. Ateeq, M., Zhang, N., Zhao, W., Gu, Y., Wen, Z., Zheng, C., & Hao, J. L. (2025). Enhancing Construction Waste Transportation Management Using Internet of Things (IoT): An Evaluation Framework Based on AHP-FCE Method. *Buildings*, 15(8), 1381. <https://doi.org/10.3390/buildings15081381>
2. Fang, B., Yu, J., Chen, Z., Osman, A. I., Farghali, M., Ihara, I., Hamza, E., Rooney, D. W., & Yap, P. (2023). Artificial intelligence for waste management in smart cities: a review [Review of Artificial intelligence for waste management in smart cities: a review]. *Environmental Chemistry Letters*, 21(4), 1959. Springer Science+Business Media. <https://doi.org/10.1007/s10311-023-01604-3>
3. Omar, M. F., Termizi, A. A. A., Zainal, D., Wahap, N. A., Ismail, N. M., & Ahmad, N. (2016). Implementation of spatial smart waste management system in malaysia. *IOP Conference Series Earth and Environmental Science*, 37, 12059. <https://doi.org/10.1088/1755-1315/37/1/012059>
4. Pardini, K., Rodrigues, J. J. P. C., Kozlov, S. A., Kumar, N., & Furtado, V. (2019). IoT-Based Solid Waste Management Solutions: A Survey. *Journal of Sensor and Actuator Networks*, 8(1), 5. <https://doi.org/10.3390/jsan8010005>
5. Sinha, B. B., & Dhanalakshmi, R. (2021). Recent advancements and challenges of Internet of Things in smart agriculture: A survey. *Future Generation Computer Systems*, 126, 169. <https://doi.org/10.1016/j.future.2021.08.006>
6. Yarubi, K. S. A., Khairy, S. O. F., Hossain, S. M. E., & Hayder, G. (2025). Internet of Things-Driven Waste Management: Paving the Way for Sustainable Smart Cities. *Processes*, 13(4), 1140. <https://doi.org/10.3390/pr13041140>
7. Ateeq, M., Zhang, N., Zhao, W., Gu, Y., Wen, Z., Zheng, C., & Hao, J. L. (2025). Enhancing Construction Waste Transportation Management Using Internet of Things (IoT): An Evaluation Framework Based on AHP-FCE Method. *Buildings*, 15(8), 1381. <https://doi.org/10.3390/buildings15081381>
8. Fatorachian, H., Kazemi, H., & Pawar, K. S. (2025). Digital Technologies in Food Supply Chain Waste Management: A Case Study on Sustainable Practices in Smart Cities. *Sustainability*, 17(5), 1996. <https://doi.org/10.3390/su17051996>
9. Nwokediegwu, Z. Q. S., Ugwuanyi, E. D., Dada, M. A., Majemite, M. T., & Obaigbena, A. (2024). AI-DRIVEN WASTE MANAGEMENT SYSTEMS: A COMPARATIVE REVIEW OF INNOVATIONS IN THE USA AND AFRICA [Review of AI-DRIVEN WASTE MANAGEMENT SYSTEMS: A COMPARATIVE REVIEW OF INNOVATIONS IN THE USA AND AFRICA]. *Engineering Science & Technology Journal*, 5(2), 507. Fair East Publishers. <https://doi.org/10.51594/estj.v5i2.828>
10. Vishnu, S., Ramson, S. R. J., Senith, S., Anagnostopoulos, T., Abu-Mahfouz, A. M., Fan, X., Srinivasan, S., & Kirubaraj, A. A. (2021). IoT-Enabled Solid Waste Management in Smart Cities. *Smart Cities*, 4(3), 1004. <https://doi.org/10.3390/smartcities4030053>
11. Fang, B., Yu, J., Chen, Z., Osman, A. I., Farghali, M., Ihara, I., Hamza, E., Rooney, D. W., & Yap, P. (2023). Artificial intelligence for waste management in smart cities: a review [Review of Artificial intelligence for waste management in smart cities: a review]. *Environmental Chemistry Letters*, 21(4), 1959. Springer Science+Business Media. <https://doi.org/10.1007/s10311-023-01604-3>
12. Fatorachian, H., Kazemi, H., & Pawar, K. S. (2025). Digital Technologies in Food Supply Chain Waste Management: A Case Study on Sustainable Practices in Smart Cities. *Sustainability*, 17(5), 1996. <https://doi.org/10.3390/su17051996>
13. Olawade, D. B., Fapohunda, O., Wada, O. Z., Usman, S. O., Ige, A. O., Ajisafe, O., & Oladapo, B. I. (2024). Smart waste management: A paradigm shift enabled by artificial intelligence. *Waste Management Bulletin*, 2(2), 244. <https://doi.org/10.1016/j.wmb.2024.05.001>
14. Sharma, V., Tripathi, A. K., & Mittal, H. (2022). Technological revolutions in smart farming: Current trends, challenges & future directions.
15. Fang, B., Yu, J., Chen, Z., Osman, A. I., Farghali, M., Ihara, I., Hamza, E., Rooney, D. W., & Yap, P. (2023). Artificial intelligence for waste management in smart cities: a review [Review of Artificial intelligence for waste management in smart cities: a review]. *Environmental Chemistry Letters*, 21(4), 1959. Springer Science+Business Media. <https://doi.org/10.1007/s10311-023-01604-3>
16. Fatorachian, H., Kazemi, H., & Pawar, K. S. (2025). Digital Technologies in Food Supply Chain Waste Management: A Case Study on Sustainable Practices in Smart Cities. *Sustainability*, 17(5), 1996. <https://doi.org/10.3390/su17051996>
17. Ghahramani, M., Zhou, M., Mölter, A., & Pilla, F. (2021). IoT-Based Route Recommendation for an Intelligent Waste Management System. *IEEE Internet of Things Journal*, 9(14), 11883. <https://doi.org/10.1109/jiot.2021.3132126>
18. Kuzhin, M., Joshi, A., Mittal, V., Khatkar, M., & Guven, U. (2024). Optimizing Waste Management through IoT and Analytics: A Case Study Using the Waste Management Optimization Test. *BIO Web of Conferences*, 86, 1090. <https://doi.org/10.1051/bioconf/20248601090>
19. Nwokediegwu, Z. Q. S., Ugwuanyi, E. D., Dada, M. A., Majemite, M. T., & Obaigbena, A. (2024). AI-DRIVEN WASTE MANAGEMENT SYSTEMS: A COMPARATIVE REVIEW OF INNOVATIONS IN THE USA AND AFRICA [Review of AI-DRIVEN WASTE MANAGEMENT SYSTEMS: A COMPARATIVE REVIEW OF INNOVATIONS IN THE USA AND AFRICA]. *Engineering Science & Technology Journal*, 5(2), 507. Fair East Publishers. <https://doi.org/10.51594/estj.v5i2.828>

20. Olawade, D. B., Fapohunda, O., Wada, O. Z., Usman, S. O., Ige, A. O., Ajisafe, O., & Oladapo, B. I. (2024). Smart waste management: A paradigm shift enabled by artificial intelligence. *Waste Management Bulletin*, 2(2), 244. <https://doi.org/10.1016/j.wmb.2024.05.001>
21. Omar, M. F., Termizi, A. A. A., Zainal, D., Wahap, N. A., Ismail, N. M., & Ahmad, N. (2016). Implementation of spatial smart waste management system in malaysia. *IOP Conference Series Earth and Environmental Science*, 37, 12059. <https://doi.org/10.1088/1755-1315/37/1/012059>
22. Pardini, K., Rodrigues, J. J. P. C., Kozlov, S. A., Kumar, N., & Furtado, V. (2019). IoT-Based Solid Waste Management Solutions: A Survey. *Journal of Sensor and Actuator Networks*, 8(1), 5. <https://doi.org/10.3390/jsan8010005>
23. Fatorachian, H., Kazemi, H., & Pawar, K. S. (2025). Digital Technologies in Food Supply Chain Waste Management: A Case Study on Sustainable Practices in Smart Cities. *Sustainability*, 17(5), 1996. <https://doi.org/10.3390/su17051996>
24. Omar, M. F., Termizi, A. A. A., Zainal, D., Wahap, N. A., Ismail, N. M., & Ahmad, N. (2016). Implementation of spatial smart waste management system in malaysia. *IOP Conference Series Earth and Environmental Science*, 37, 12059. <https://doi.org/10.1088/1755-1315/37/1/012059>
25. Sinha, B. B., & Dhanalakshmi, R. (2021). Recent advancements and challenges of Internet of Things in smart agriculture: A survey. *Future Generation Computer Systems*, 126, 169. <https://doi.org/10.1016/j.future.2021.08.006>
26. Yarubi, K. S. A., Khairy, S. O. F., Hossain, S. M. E., & Hayder, G. (2025). Internet of Things-Driven Waste Management: Paving the Way for Sustainable Smart Cities. *Processes*, 13(4), 1140. <https://doi.org/10.3390/pr13041140>

